

VIY5-37

Double Frequency Ground Penetrating Radar

Double frequency GPR system for diverse application. VIY®5-37 allows you to simultaneously detect objects at large depths and investigate smaller depth in detail

With VIY®5-37, you can quickly detect position and depth of metallic and non-metallic objects:

- metal utilities, including pipes and cables
- non-metallic pipes, including PVC and asbestos cement ones
- concrete sewer systems
- buried tanks and barrels
- underground constructions (tunnels, basements and etc.);
- sources of leakage from pipelines by indirect signs (excessive moisture).
- subsurface objects (voids, cracks, heterogeneous inclusions);



VI45-37 GPR



Wide Operation Possibilities

- Simplified interface for basic applications
- Wide range of abilities in standard interface



GPR Antenna

- Two GPR antennas in one case
- Shield antenna systems
- Same antenna can be used with cart or in manually mode
- Exchangeable bottom protector
- Original "Telbin" technology
- Built-in tilt sensors
- Robust fiberglass body
- Low power consumption
- More than 8 hours of continuous operation



Any Windows Computer

- Any Windows-based computer is applicable
- The antenna directly connects to PC



Any External GPS Receiver

- GPS receiver connects directly to GPR antenna
- GPS can operate as trigger device



Robust Compact Foldable Cart

- Lightweight design
- Folds up very quickly
- Built-in odometer
- Can be used on rough terrain
- Has a screw-bolt for GPS receiver fixing
- Simple adjustable antenna mount
- Built-in battery compartment



Sealed Lead Acid Battery

- Easy replacement
- Worldwide available battery
- Standard form factor battery



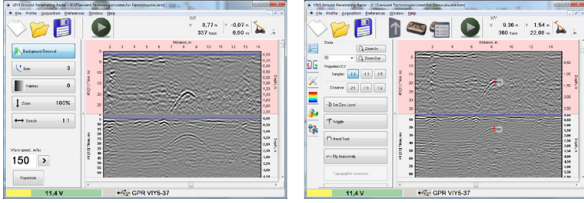
Connections

- USB or WiFi connections
- Easy to use push-pull connectors
- Endurance sealed connectors
- Simple setup of WiFi
- Standard extender can be used

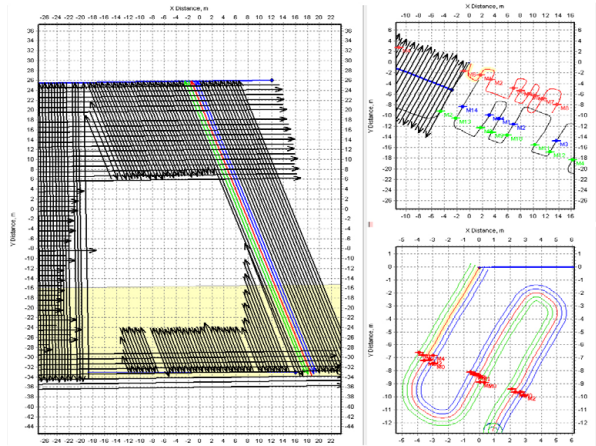


VIY5-37 GPR

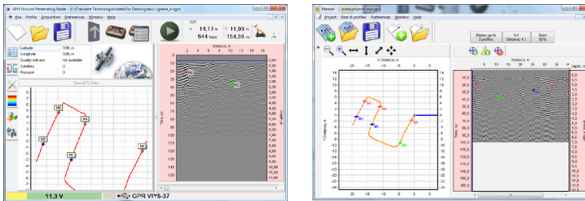
Simplified or Advanced Interface



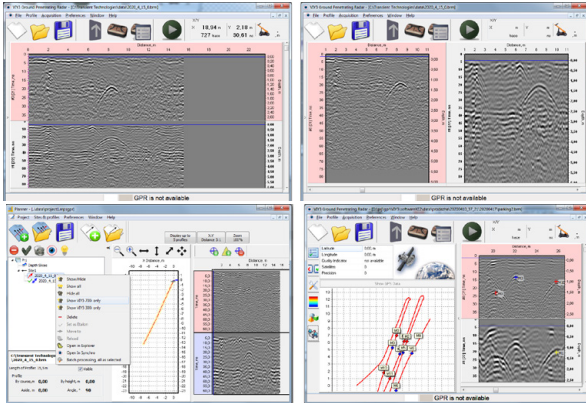
Arbitrary Positions of GPR Profiles in Project



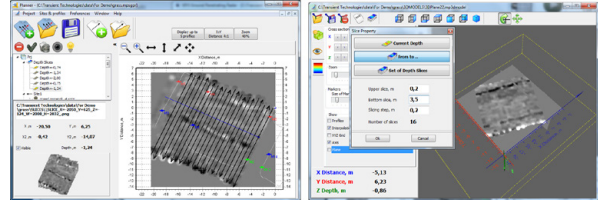
Visualization of GPS Track



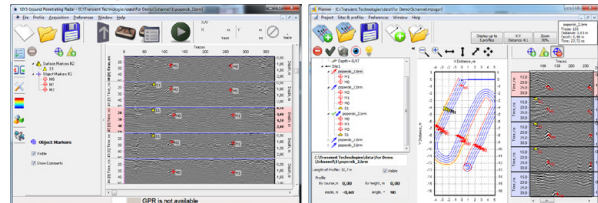
Wide abilities of Visualisation



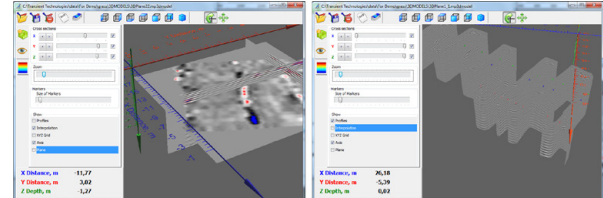
Depth Slices



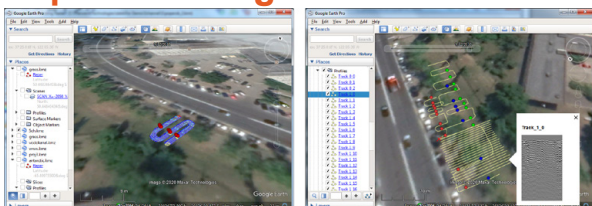
Two Types of Markers



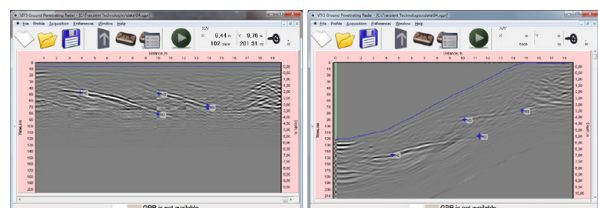
3D Visualization



Export to Google Earth



Automatic Topographic Correction





VIY[®]5-37 Specifications

Antennaes frequency	300&700 MHz
Survey window	66..166 & 30..75 ns
Depth of sounding up to (determined by soil properties)	8 m
Spatial resolution (better than)	0.1 m
Trigger mode	single, internal, external
Dimensions of antenna, L x W x H	550 x 310 x 170 mm
Dimensions of cart, working mode L x W x H	900 x 460 x 1050 mm
Dimensions of cart, folding mode L x W x H	900 x 460 x 300 mm
Weight of antenna	6 kg
Weight antenna with cart	20,5 kg
Operating temperature range	-20°C to +40°C
Operation time	not less 8 then hours